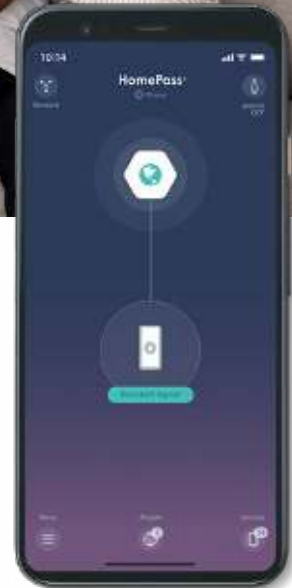


GET READY TO LIVE YOUR BEST LIFE

**With Smart, Adaptive
Managed WiFi Service
From Blue Stream Fiber**



Our smart, Managed WiFi solution and App bring you reliably fast internet speeds with dependable connectivity for all of your devices, all managed by our HomePass App! Through the App, you can monitor and manage the performance and connectivity of any device connected to your home network!



Blue Stream Fiber Total WiFi Features

Adaptive WiFi

Sends stronger signals to rooms where WiFi usage is higher and automatically provides a temporary speed boost when downloading large files.

Parental Controls

Allows for restricting access to certain online content and freezing WiFi access for devices. Set access rules at the device level, even for designated dates and times.

Guest Access

Gives you the ability to create guest networks and temporary passwords to control access to your home network. Whether it's the babysitter or a weekend guest, you'll have complete control over who connects to your WiFi Network and how they use it.

Total Control from the App

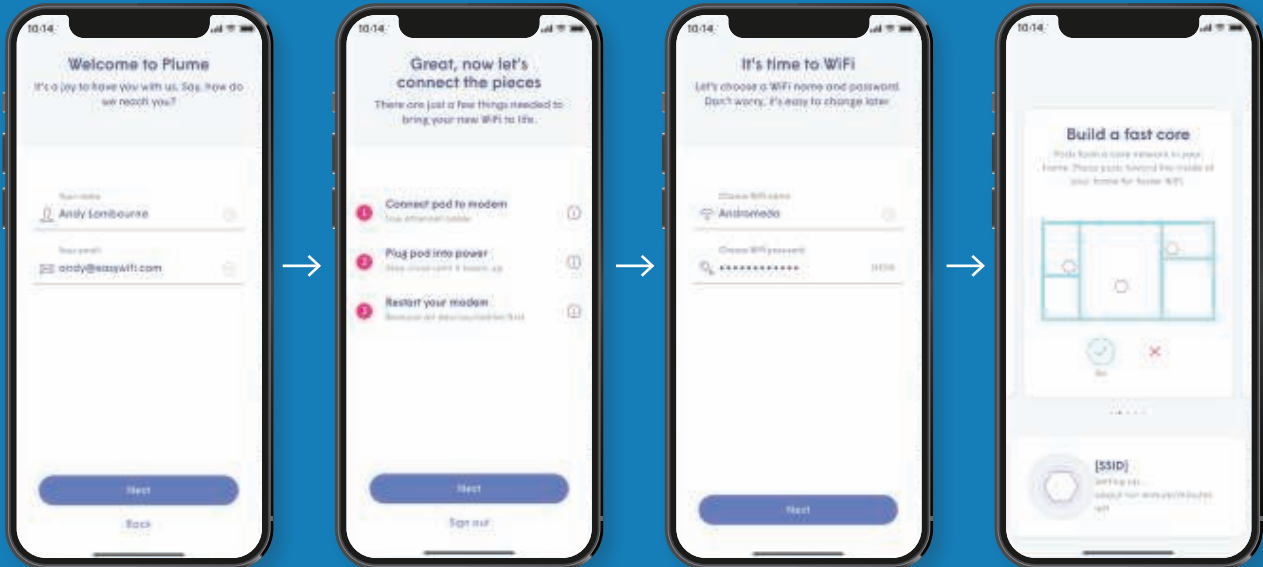
Our visually appealing and intuitive App allows you to enjoy the flexibility to monitor and control your home WiFi network whether you're at home or on the go.

AI Security™

Provides built-in protection and device security against online attacks like malware and phishing. Advanced cybersecurity means you'll have ad blocking and automatic quarantining of compromised devices.

7 simple steps

The Homepass gets subscribers up and running in minutes by connecting directly to the Cloud, where HomePass' Control™ service supports seamless customer self-installation, configuration, monitoring, and interaction.



Step 1:

Create an account

Step 2:

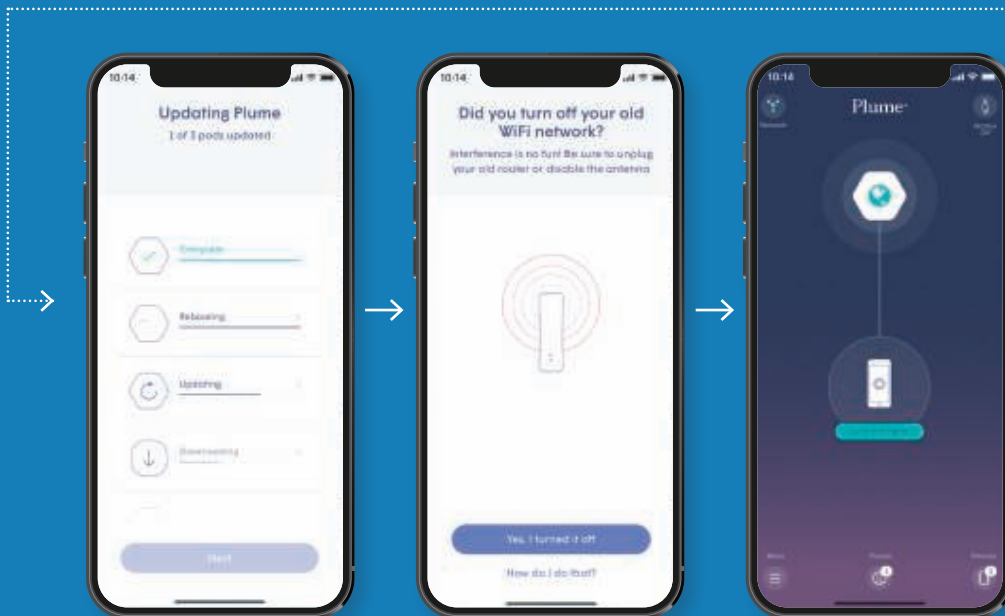
Get connected

Step 3:

Set a Wi-Fi name and password

Step 4:

Wifi Points



Step 5:

Automatic updates

Step 6:

Out with the old

Step 7:

Complete the self-installation