

**Blue Stream**  
fiber

A photograph of a family of four—a mother, a father, and two children—sitting closely together on a light-colored sofa. They are all smiling warmly at the camera. The mother is in the center foreground, with a young girl behind her. The father is to the right, with a young boy sitting on his lap. The background shows a bright, modern living room with bookshelves.

**PROTECT WHAT  
YOU LOVE WITH  
BLUE STREAM FIBER  
TOTAL HOME SECURITY.**

---

**Security. Safety.  
Total Home Control.**



# CUSTOMIZE YOUR TOTAL HOME SECURITY SOLUTION

---

Your home is exactly that. Yours. You should decide how you protect what's in it, from material possessions to the memories you'll make with the ones you love.

Blue Stream Fiber empowers you to customize a system to provide the security, safety and comfort you want. From protecting against intruders to automating light and thermostat settings, we've got your back. All that's left for you to do is relax and enjoy life.

# SO MUCH MORE THAN SECURITY

---

## World-Class Security

Enjoy peace of mind around the clock with 24/7 professional monitoring of all your alarms and motion sensors. Receive alerts to movement and potential intruders and verify them yourself by video to avoid any pet-related or other false alarms. No matter where you are—no matter the time of day or night—you can rest easy knowing that our vigilant team is at the ready, always prepared to alert the appropriate first-responders if necessary.

## Whole-Home Safety

Blue Stream Fiber's whole-home system doesn't just protect you from intruders, it monitors everything from fires and floods to smoke and carbon dioxide. Our job is to protect what you love from any type of threat, whether from outside or within. Built and installed by our home safety experts, this system uses the latest technology to monitor even the slightest irregularity so you don't have to.

## Smart Home Control

With safety and security taken care of, there's more time to focus on comfort and control. Blue Stream Fiber connects your entire home with touch-screen panels and built-in Amazon Alexa. Managing your security settings, changing the temperature, adjusting the lighting and more are all just a voice command—or push of a button—away. Going somewhere? Set your system to restore your preferred settings before you return. It's that simple.



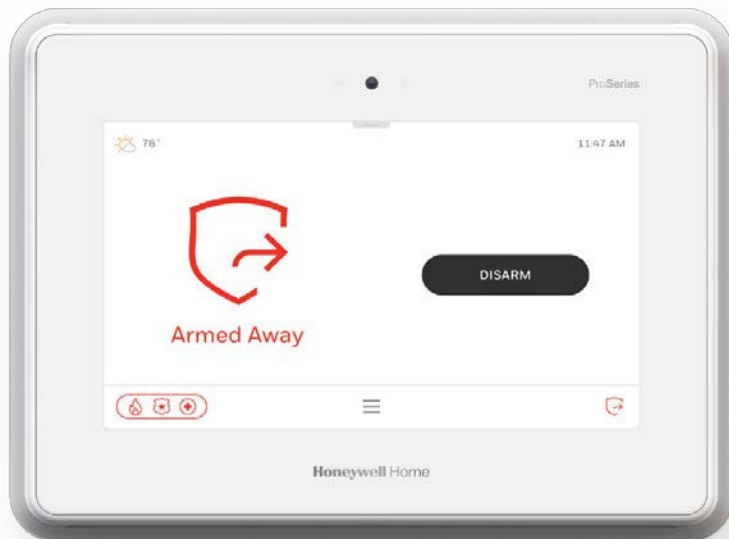
# EXPLORE THE TOTAL HOME STARTER PACKAGE

---

Take advantage of our special promotion and Upgrade to Blue Stream Fiber's Total Home Security for **as low as \$15 a month, for 24 months**. Once you sign up, you can further tailor your system to accommodate your specific needs.

## As part of the promotion, you'll receive:

- New ProSeries A7 Touchscreen Panel
- Skybell Video Doorbell
- We will take over existing contacts and make them available in the **Total Connect** app by zone!
- Smart Home Package Included (Value of \$5.00 per month). Support for any compatible Home Automation Z-wave device added.



**No matter what you choose, Blue Stream Fiber's fast and friendly installation professionals will have you up and running in no time.**

*Installation of outdoor cameras may require an electrician at the cost of the customer.*



# ENJOY PEACE OF MIND WITH BLUE STREAM FIBER'S SECURITY PROTECTION PLAN OPTIONS

Now You Can Ensure Your Services Are Protected.

See the graphic for details on what each plan can cover for you.

	Home Protection Plan	Security Plus Protection Plan
<b>PRICE</b>	<b>\$4.95</b>	<b>\$6.95</b>
<b>COVERAGE</b>		
Poor picture quality due to faulty or loose connections or splitters	✓	
Accidental Fiber Damage	✓	
External or Internal wire issues caused by animal or contractor damage	✓	
Accidental damage of phone wiring	✓	
Dropped/damaged remote control	✓	
Accidental damage of ONT	✓	
Accidental damage of Set-top box	✓	
Customer Education Home Visit due to customer-owned equipment or improper customer installation of TV, DVD player, splitter, computer, network card, printer, audio system, phone, etc.	✓	
Customer Education Home Visit as it relates to Blue Stream Service and provided equipment (includes programming remote or having to replace batteries and correcting TV settings like input or channel #)	✓	
Home Security Battery Replacement		✓
Home Security Panel Replacement		✓
Upgraded Total Home / Upgrade 7 day video Storage		✓

## Comprehensive Service Protection

Avoid expensive repairs and get the most out of your Home Security Service for just pennies a day! Blue Stream Fiber's Home Protection Plan provides comprehensive service protection that includes repair or replacement of inside and outside wiring and of Blue Stream Fiber equipment. As an added benefit, customers are eligible for 100% off qualifying home visits!

### Home Protection Plan Includes:

We know accidents can happen. Things like power surges and pet or contractor damage could happen at any time. Protect yourself from the unexpected with the Home Protection Plan.



Blue Stream  
Fiber equipment  
repair or  
replacement



Fiber and coaxial  
wiring repair or  
replacement



100% off eligible  
home visits

### Security Plus Plan Includes:



Battery  
Replacement



Panel  
Replacement



Upgraded  
Total Home/  
7 day video  
storage

### Let us keep you and your services secure!

Certain restrictions apply. See <https://www.bluestreamfiber.com/legal/home-protection-plan/> for details on the Home Protection Plan and Security Plus Protection Plan. Plan must be on customer's account for six (6) continuous months following any use of the Plan benefits to avoid being billed full service charge for applicable service calls. If the Plan is cancelled within six (6) months of exercising any benefits of the Plan, Blue Stream may apply a full service charge for all service calls made during that period.

# LOOKING FOR ADDITIONAL FEATURES, EXPLORE THEM ALL!

No two lives are the same, so there's no one-size-fits-all approach to home security. That's why we designed our Home Security system to be as flexible as possible. Our professionals can help you find the perfect combination of devices and solutions to fit your needs. And we'll help you adapt when those needs change. Your life will evolve. Get a system you can count on to evolve with you.

## Most Popular Standard Home Security Devices



Door/Window Contact  
**\$14**



Glassbreak Detector  
**\$52**



Keyfob  
**\$17**



Wireless Touchscreen Secondary Keypad  
**\$150**

## Most Popular Standard Home Safety Devices



Smoke Detector  
**\$57**



Combination Smoke, Heat & Carbon Monoxide Detector  
**\$124**



Indoor Motion Detector & Viewer  
**\$36**



Wireless Indoor Camera  
**\$50**

## Most Popular Smart Home Devices



Skybell Trim Video Doorbell  
**\$135**



Z-Wave Plug In Switch - dual outlet  
**\$32**



Z-Wave Plug In Dimmer - dual outlet  
**\$33**

## Complete List of Equipment Available & Pricing

### HOME SECURITY DEVICES

Wireless Touchscreen Secondary Keypad .....	\$150
Wireless LCD Secondary Keypad .....	\$67
Keyfob .....	\$17
Panic Button Device .....	\$29
Medic Alert.....	\$29
Window/Door Contact .....	\$14/each
Indoor Motion Detector .....	\$36
Glassbreak Detector.....	\$52
Shock Detector.....	\$35
Flood Detector.....	\$33
Temperature Detector.....	\$33
Smoke Detector.....	\$57

### HOME SAFETY DEVICES

Carbon Monoxide Detector.....	\$57
Combination Smoke, Heat, & Carbon Monoxide Detector .....	\$124
Heat Detector.....	\$47
Wireless Indoor Siren.....	\$55
Wireless Outdoor Siren .....	\$80
Indoor MotionViewer Camera.....	\$57
IP Indoor Cameras .....	\$50-\$130
Outdoor Camera.....	\$175
Skybell Trim Video Doorbell (includes 7 days video storage with purchase)....	\$135

### SMART HOME DEVICES

Z-Wave Plug-In Dual Outlet Wall Switch.....	\$32
Z-Wave Plug-In Dual Outlet Dimmer .....	\$33
Z-Wave Plug-In Outdoor Switch .....	\$38

## Additional Services & Pricing

7-day Video Storage.....	\$3/Month
30-day Video Storage.....	\$6/Month
Smart Home Service to Support Z-Wave Products .....	\$5/Month
Secure Plus Plan.....	\$6.95/month
Total Home Plan.....	\$9.95/month



# READY TO GET STARTED?

---

Simply give us a call (772) 345-6000, and we'll take it from there. While you'll have full control of your customized system, our network of friendly local professionals will handle everything from expert installation to updates, maintenance and monitoring. It's our job to work behind the scenes to keep you safe, secure and comfortable. It's your job to enjoy your new home and rest easy. So, let's get to work.

# LOOK FORWARD TO PEACE OF MIND.

---

**For more information,  
please call (772) 345-6000  
or visit [bluestreamfiber.com/tradition](http://bluestreamfiber.com/tradition)**